

Candy Cane

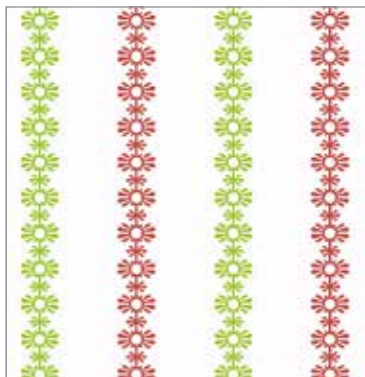
FABRICS BY RENÉE NANNEMAN



Quilt Design:
Pink Hippo Quilts

Quilt Size: 54" x 54"

andoverfabrics.com



About Candy Cane

Visions of little elves and snowmen dancing with candy canes help bring to life the colorful holiday palette of my Candy Cane prints ... a mix of peppermint stripes, snow swirls, berry sprigs and stars that sparkle. Festive reds and greens with accents of gold and teal become the perfect recipe for merry-making! Happy colors in happy quilts equal happy memories! — *Renée Nanneman*

andover

•
•
•
•
makower uk
The Henley Studio

Free Pattern Download Available

1384 Broadway New York, NY 10018
Tel. (800) 223-5678 • andoverfabrics.com

Candy Cane



Introducing Andover Fabrics new collection: **CANDY CANE** by Renée Nanneman

Quilt designed and made by Pink Hippo Quilts

Get a head start on making a holiday quilt with this simple pattern that features novelty stripes and fusible ornaments. The piecing uses quick methods that make the patchwork easy enough for anyone.

Quilt finishes 54" x 54"
24 Block Y: 3" x 6"
32 Block Z: 3" x 6"

Cutting Directions

Note: Read assembly directions before cutting patches. All measurements are cut sizes and include 1/4" seam allowances. A fat 1/8 is a 9" x 21" cut of fabric. Borders are cut the exact lengths required plus 1/4" seam allowances, although you may prefer to cut them with extra length for insurance for mitered borders. WOF designates the width of fabric from selvedge to selvedge (approximately 42" wide).

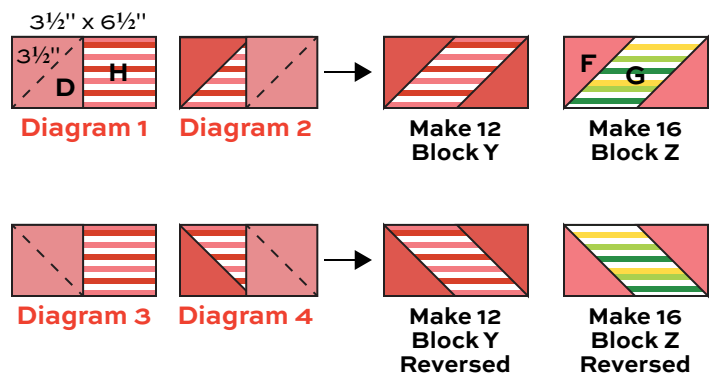
- Fabric A** Cut (1) ornament #6
- Fabric B** Cut (1) ornament #1
- Fabric C** Cut (1) ornament #2
- Fabric D** Cut (52) squares 3 1/2" x 3 1/2"
- Fabric E** Cut (6) strips 2 1/2" x WOF for binding
Cut (1) ornament #3
- Fabric F** Cut (68) squares 3 1/2" x 3 1/2"
Cut (1) ornament #6
- Fabric G** Fussy-cut (32) rectangles 3 1/2" x 6 1/2"
- Fabric H** Fussy-cut (24) rectangles 3 1/2" x 6 1/2"
- Fabric I** Cut (2) ornament #4 halves, cut lengthwise
Cut (4) borders 2" x 47", cut crosswise and pieced
- Fabric J** Cut (1) ornament #4 center strip, cut lengthwise
Cut (4) borders 2" x 35", cut crosswise and pieced
- Fabric K** Cut (1) ornament #5
- Fabric L** Cut (6) ornament tops
- Fabric M** Cut (1) square 32" x 32" for center
Cut (4) borders 1 1/4" x 48 1/2", cut crosswise and pieced
Cut (4) borders 1 1/4" x 44", cut crosswise and pieced
Cut (4) borders 1 1/4" x 36 1/2", cut crosswise and pieced
- Backing** Cut (2) panels 31" x 62", pieced to fit quilt top with overlap on all sides

Fabric Requirements

Fabric	Requirements	Yardage	Fabric
Fabric A	ornament	fat 1/8 yard	7261-G
Fabric B	ornament	fat 1/8 yard	7261-R
Fabric C	ornament	fat 1/8 yard	7262-G
Fabric D	blocks	5/8 yard	7263-R
Fabric E	ornament, binding	5/8 yard	7264-G
Fabric F	ornament, blocks	3/4 yard	7264-R
Fabric G	blocks	1 yard	7265-G
Fabric H	blocks	3/4 yard	7265-R
Fabric I	ornament, border	5/8 yard	7266-G
Fabric J	ornament, border	1/2 yard	7266-R
Fabric K	ornament	fat 1/8 yard	4068-R
Fabric L	ornament tops	fat 1/8 yard	5922-G
Fabric M	center, borders	1 1/2 yards	A-T-White Lies
Backing		3 5/8 yards	5922-R

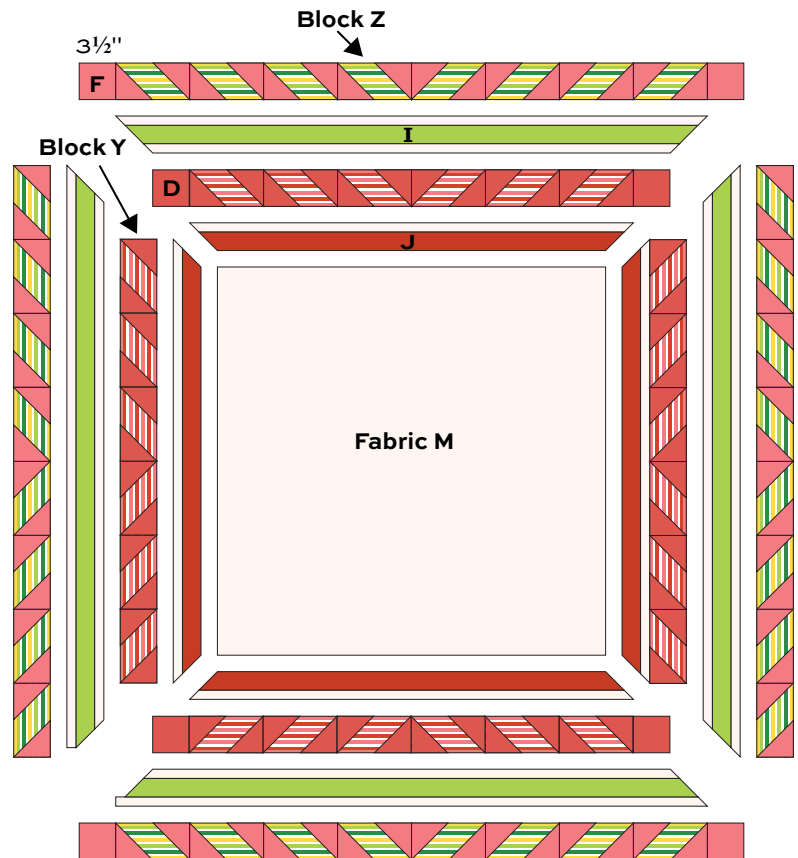
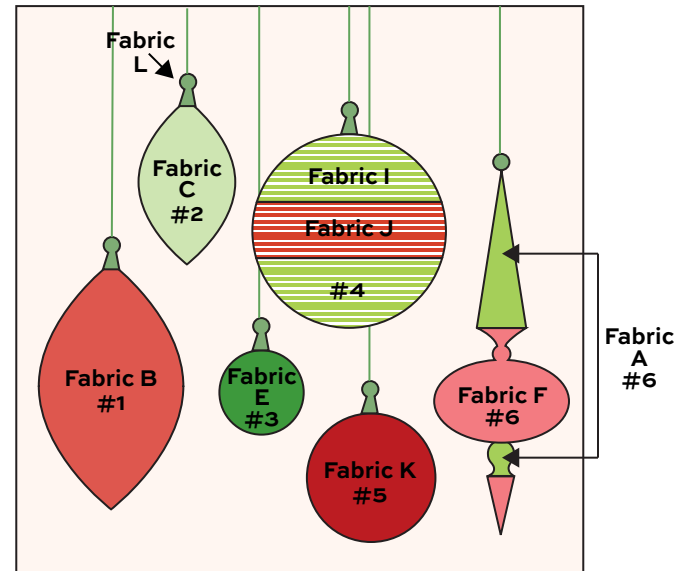
Making the Quilt

1. Cut Fabric G rectangles from the same part of the stripe so they are all alike. Do the same with Fabric H rectangles. Blocks Y and Z are made with quick stitch-and-flip piecing methods. Draw a diagonal line on the wrong side of 48 Fabric D squares. Referring to Diagram 1, place a marked square on one end of a Fabric H rectangle, right sides together. Stitch on the drawn line in the direction shown; trim away and discard excess fabric. Press open. Repeat on the other end, watching orientation of the sewing (Diagram 2). Make 12 Block Y like this. Referring to Diagram 3, place a marked square on a Fabric H rectangle. Stitch on the drawn line in the direction shown. Repeat with a second square to make a Block Y Reversed (Diagram 4). Make 12 Block Y Reversed.



Candy Cane Quilt

2. Repeat Step 1 to make 16 Block Z and 16 Block Z Reversed, using Fabric G rectangles and Fabric F squares.
3. Trace the ornament motifs onto the paper side of paper-backed fusible web. Following manufacturer's instructions, fuse traced patterns to the wrong side of the appropriate fabrics. Cut out parts on the drawn lines. Refer to the quilt photograph to position the patches on the center background square. Fuse each patch to the square, following manufacturer's instructions. Finish the edges with a decorative machine stitch using contrasting thread, or use an invisible thread with a blind appliqué machine stitch.
4. Add the hanging "strings" above each ornament with hand embroidery, a narrow machine zigzag stitch, or a thin cording that is couched in place.
5. Refer to the Quilt Diagram. Matching centers, sew the shortest Fabric M border to one side of a Fabric J border. Repeat to make 4 border units like this. Sew to the quilt, matching centers. Miter the corners and trim the excess from the seam allowances.
6. Join 3 Block Y and 3 Block Y Reversed, turning them as shown. Repeat to make 4 borders like this. Sew 2 borders to the sides of the quilt. Sew Fabric D squares to ends of remaining borders and sew to the top and bottom.
7. Matching centers, sew a Fabric I border between Fabric M 44" x 48½" borders. Repeat to make 4 border units like this. Sew to the quilt. Miter the corners.
8. Sew 4 Block Z and 4 Block Z Reversed as shown. Repeat to make 4 borders like this. Sew to the sides of the quilt. Sew Fabric F squares to ends of remaining borders and sew to the top and bottom.



Quilt Diagram

Finishing the Quilt

9. Layer the quilt with batting and backing and baste. Quilt in the ditch around borders and block patches. Quilt around the appliqué motifs. Bind to finish the quilt.

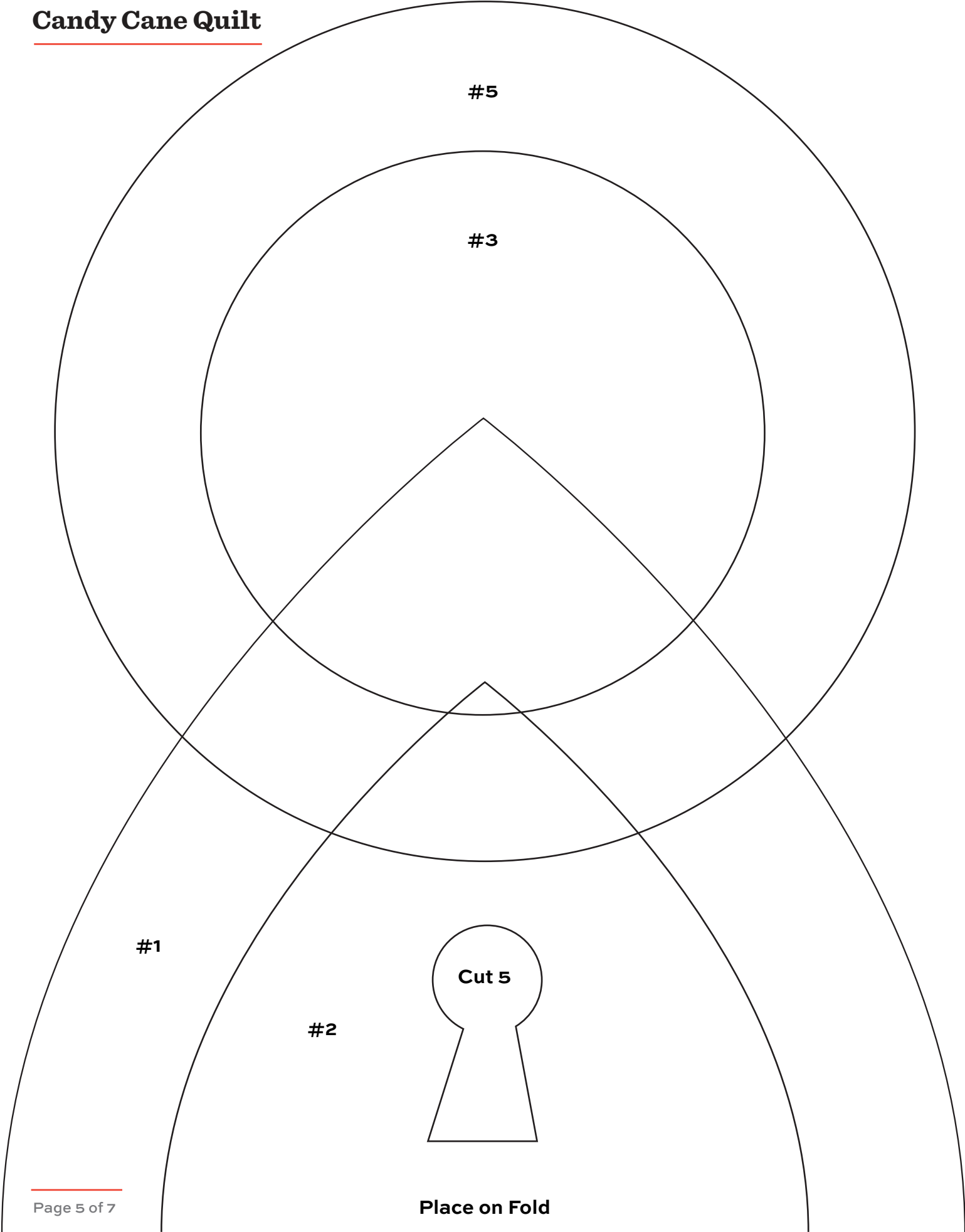
Candy Cane Quilt

#4 Top

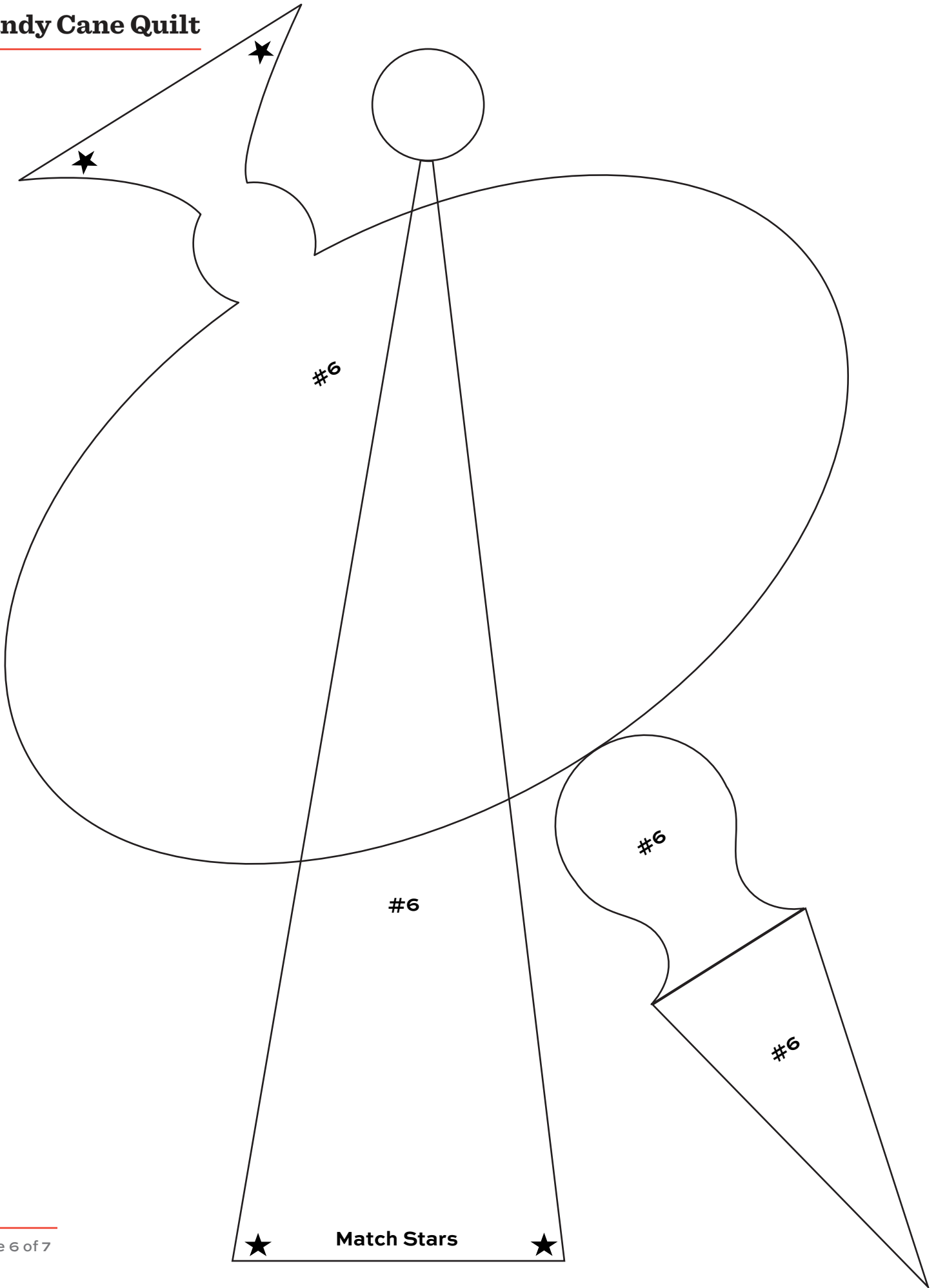
#4 Center

#4 Bottom

Candy Cane Quilt



Candy Cane Quilt

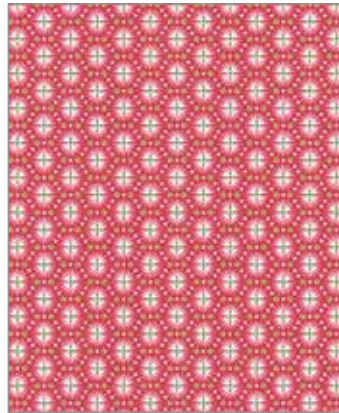


Candy Cane

FABRICS BY RENÉE NANNEMAN



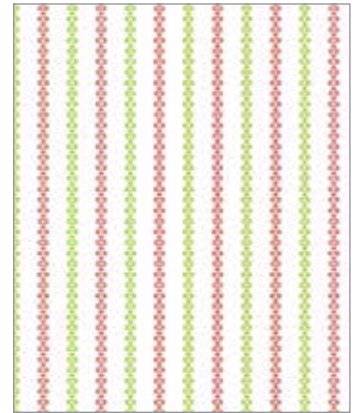
7261-G*



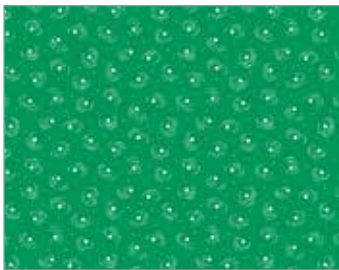
7261-R*



7262-G*



7262-R



7263-G



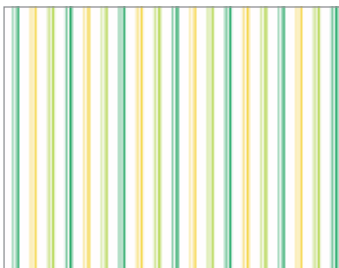
7263-R*



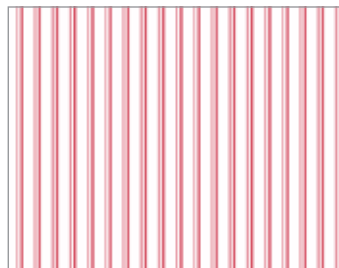
7264-G*



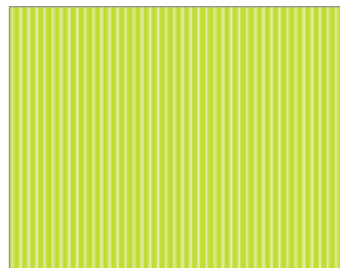
7264-R*



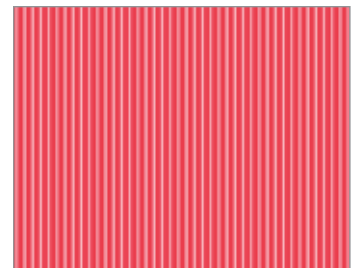
7265-G*



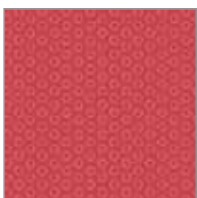
7265-R*



7266-G*



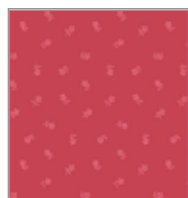
7266-R*



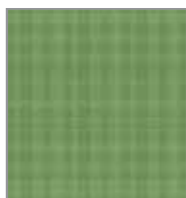
4068-R*



4071-Y



4265-R



5922-G*



5922-R*



5922-W



A-T-White Lies*

All fabrics are used in quilt pattern. Fabrics shown are 30% of actual size.

andover



makower uk
The Henley Studio

Free Pattern Download Available

1384 Broadway New York, NY 10018
Tel. (800) 223-5678 • andoverfabrics.com